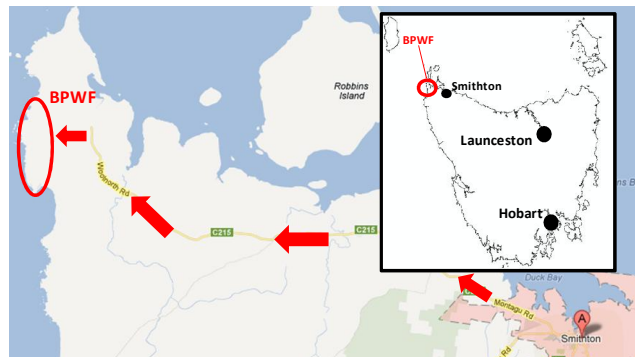


Bluff Point Wind Farm (BPWF)

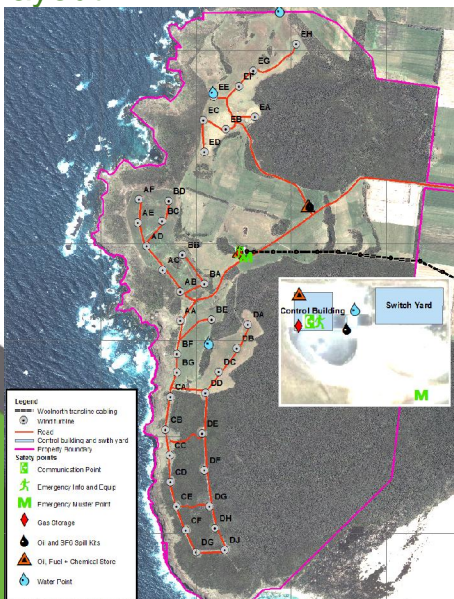
BPWF is owned and managed by Woolnorth Wind Farm Holding Pty Ltd (Woolnorth Wind Farms), a joint venture company owned by Hydro Tasmania (25%) and Shenhua Clean Energy Holdings (75%). The operational management of the wind farm is conducted by both Woolnorth Wind Farms and Hydro Tasmania staff, with Vestas as the primary service contractor.

Location

BPWF is located 40km west of Smithton in north west Tasmania. The wind farm consists of 37 V66 (1.75 megawatt) Vestas turbines and a 43 km (110kV, 148 tower) single circuit transmission line connected to the national grid at Smithton sub-station.



Site Layout



Site Roles & Contacts

Site Supervisor - Adam Mullins (0400 675 743)
Regional Co-ord. - Lance Lovell (0439 380 410)
HSE Advisor - Robert Barbour (0407 835 261)
Site Sup. (Vestas) – Ben Poke (0427 390 005)
Farm Manager – Hugh Finlayson (0400 377 906)

HSE Management System

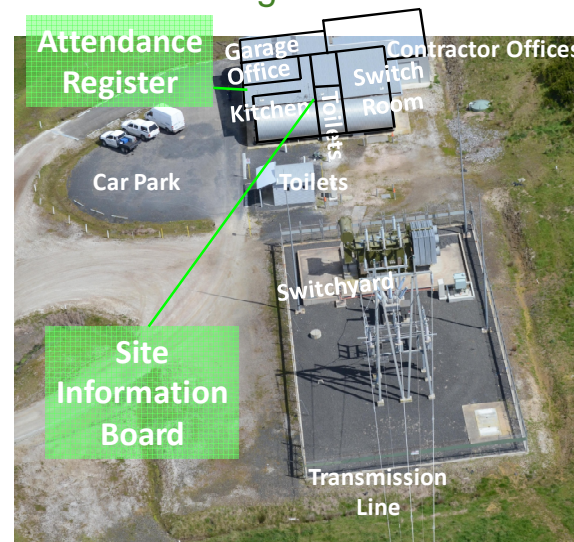
BPWF is managed under the Hydro Tasmania Health, Safety & Environment System, with supporting documents supplied by Woolnorth Wind Farms. All HSE documents are available at www.hydro.com.au/health-safety-and-environmental-management. The portal username is ContractorHSE@woolnorthwind.com.au, with the password “CØntractorHSE”.

Required PPE

PPE is mandatory (except offices and car park)



Control Building



Traffic Management

- Speed limits are signposted across the site and are to be adhered to.
- Off-road driving requires authorisation and diesel vehicles only.
- Vehicles are to be parked into the wind and out of turbine “drop zone”.
- All vehicles are to arrive registered, clean, well serviced, have first aid kits, and fire extinguishers.

Site Communications

- Telephones are available at the control building
- Bluff Point generally has poor mobile phone reception without a high gain aerial.
- Vestas have a private UHF channel with a site repeater.
- Internet access can be made available.

Site Security and Access

- All personnel must register their attendance when arriving and leaving site.
- Security gates control access to the site. These are operated via swipe cards (available from the Site Supervisor).
- There is no reception on site, so visitors need to organise in advance their arrival.

Site Safety, First Aid & Emergencies

- The Safety Management and Emergency Response Plans are at the site information board as well as available at the Hydro website.
- First aid kits are located in the Control Building, and site vehicles.
- A defibrillation unit is located in the Control Building.
- All site personnel are Lvl 2 first aid trained.
- Emergency lighting exists within the buildings but not the turbines.
- **For EMERGENCY SERVICES in Australia ring 000.**

Hazards

- Site remoteness – poor comm.s, slow emergency service response.
- Weather conditions can be extreme on site with strong winds, hot fire-risk weather in summer and wet conditions possible any time of year.
- High incidence of snakes on site, gaiters must be used if in long grass.
- BPWF is a multiple use site with staff, contractors, farm staff, tourism activities and heavy vehicles present.

Drugs, Alcohol & Smoking

- Random drug and alcohol testing, 0.0 BAL, 0 tolerance
- Smoking on hardstands only- all butts to be binned.

Chemicals

All chemicals stored on site are to be approved with an SDS prior to entry. Their storage, handling, use, and disposal are to be conducted in accordance with their SDS, Australian Standards, and the On-Site Chemical Management Protocols.

Environment

- BPWF operates under state and commonwealth environmental permits, and associated management plans (EMPs).
- All the environmental management requirements for the site are consolidated in the Site EMP.
- One of the most significant concerns for BPWF is the collision of birds with turbine blades. Considerable research is conducted to understand the risk, however, any bird collisions that are identified need to be reported immediately.



Wedge-tailed eagle



White-bellied sea eagle

Environment (cont.)

- No pets, firearms, fire wood collection or fires are allowed on site, without authorisation.
- All rubbish is to be disposed of in bins.
- All machines, vehicles and equipment are to arrive at site free of mud and vegetation.

Heritage

The Bluff Point property is home to a number of Aboriginal heritage sites. If any items of apparent heritage value are identified, then the Site Supervisor should be notified immediately.

Farming activities

The Bluff Point property is owned by Woolnorth Wind Farms. The property is grazed under a licence held by the Van Dieman's Land Company, primarily for dairy production.

Reporting of Incidents

All incident and hazardous observations are to be reported to the site supervisor. These include injuries, near misses, spills, dead or injured animals (farm or native), equipment failures, trespassers.

Woolnorth Wind Farm Holding Pty Ltd

ACN: 154 051 617

Lvl 1, 59 Cameron Street
Launceston, Tasmania 7250

Email: Adam.Mullins@WoolnorthWind.com.au

PO box 371, Smithton, TAS 7330



Bluff Point Wind Farm Site Information

**The wind farm is remote with no visitor reception.
Contact your site rep. BEFORE travelling to site.**